



PROSIECT FFORDD CHURCHILL & DWYRAIN CANOL Y DDINAS

DIWEDDARIAD PROSIECT

Mae gwaith ar y gweill i oleuo tywyllwch y gamlas. Rydym yn rhagweld y bydd y clawr yn cael eu tynnu'n llwyr erbyn canol mis Medi i ganiatáu i waith symud ymlaen ar nodweddion newydd o amgylch y gamlas. Mae gwaith adeiladu sylfaen y bont wedi dechrau er mwyn arwain at waith adeiladu gerddi glaw o fewn Cwr y Gamlas.

Rydym wedi cwblhau'r gwaith adeiladu ar Stryd Adam ac wedi comisiynu signalau traffig newydd ar y gyffordd, a gynlluniwyd ar gyfer gwaith hwyrach yn y mis. Bydd cerbydau yn medru troi i'r dde oddi ar Stryd Adam i Ffordd Churchill. Rydym hefyd wedi newid y cynllun ar Ffordd Churchill i gyflwyno giât fysiau a hyd yr ochr chwith o'r lôn sy'n gwthio'r holl draffig arall i'r dde o'r ynys ganolig. Mae hyn wedi'i gynllunio i wella llif pob cerbyd ar hyd Ffordd Churchill.

Mae'r gwaith adeiladu wedi symud ymlaen ar hyd Teras yr Orsaf a Stryd Guildford. Cafodd palmentydd a chelfi stryd bresennol eu gwaredu ac wedi eu disodli gan gyrbau, palmentydd a dodrefn stryd newydd. Mae yna mân newidiadau wedi bod i gynllun y ffordd er mwyn paratoi ar gyfer cyflwyno lôn feiciau dwy ffordd ar hyd ochr y ffordd gerbydau.

Os hoffech fwy o wybodaeth am deithio o fewn yr ardal yn ystod ein gwaith, ewch i'n gwefan.

CYLCHLYTHYR MEDI 2022

EDRYCH YMLAEN

Dros y mis nesaf byddwch yn dechrau sylwi ar weithgarwch ar hyd Teras yr Orsaf gyda'r gwaith yn cael ei gwblhau o flaen Gorsaf Heol y Frenhines. Bydd y gweithiau hyn yn cynnwys tair gardd glaw a fydd yn dod â golwg newydd wyrddach i'r ardal ar ffurf systemau draenio trefol bioamrywiol cynaliadwy.

Mae disgwyl i'r gwaith i ddechrau ar ogledd Stryd Edward. Bydd hyn yn cynnwys gwelliannau priffyrdd, adnewyddu palmentydd, dodrefn stryd a draeniau ar hyd y stryd i helpu cysylltu Cwr y Gamlas newydd i seilwaith trafndiaeth hanfodol.

Bydd gwaith pwysig yn parhau o fewn Cwr y Gamlas lle bydd strwythurau yn dechrau ymddangos uwchben y ddaear gan gynnwys 4 sylfaen pont a rhodfa, a fydd i gyd yn symud ymlaen o fewn y mis. Bydd pob clawr yn cael eu dadorchuddio yn ystod mis Medi a'r gwaith sylfaen i ffurfio siâp newydd y stryd yn symud ymlaen.



Gwaredu canopi yn y Capitol



Arallgyfeirio prif linellau nwy a dŵr



Goleuo'r gamlas ac ymweliad y Cynghorwyr



## YMGYSYLLTU Â'R GYMUNED

Yn gyntaf hoffem ddiolch i'r holl ysgolion sydd wedi bod yn rhan o'n prosiect dros yr ychydig fisoedd diwethaf. Bu dros 180 o ddisgyblion yn cymryd rhan ac mae eu gwaith bellach yn cael ei arddangos ar ein hysbysfyrddau ar draws ein safle yng Nghwr y Gamlas. Rydym yn gobeithio eich bod wedi mwynhau'r prosiect o ddylunio a gweld eich gwaith celf derfynol yn cael eu harddangos i'r cyhoedd.

Fel rhan o'n hymrwymiad i ymgysylltu â'r gymuned mae nifer o'n tîm safle wedi cofrestru i redeg Hanner Marathon Caerdydd eleni ar ran Shelter Cymru. Rydym wedi addo i godi dros £2000 i gefnogi'r gwaith anhygoel y mae'r elusen yn ei wneud i gefnogi'r rhai sy'n ddigartref neu'n agored i niwed yn y ddinas. Mae ein tîm yn cynnwys rhedwyr rheolaidd a'r rhai sy'n dod i'r afael am y tro cyntaf i ymgymryd â'r her.

Os oes gennych unrhyw syniadau neu fentrau cymunedol yr ydych yn teimlo gallwn eu cefnogi, cysylltwch â ni.

Ar y safle rydym bellach wedi gosod man gwyllo o fewn ein hysbysfyrddau i'ch galluogi i weld y cynnydd wrth i ni ddechrau ar y gwaith o ddadorchuddio'r gamlas yn y misoedd nesaf.



Rydym yn deall bod gwaith adeiladu ar garreg eich drws yn swnllyd ac yn aflonyddgar. Rydym wir yn gwerthfawrogi eich amynedd a'ch dealltwriaeth wrth i ni gwblhau'r gweithiau hyn. Rydym yn ceisio rhoi'r wybodaeth ddiweddaraf i chi am waith y prosiect ond, oherwydd natur gyflym y cynllun hwn ar rai achlysuron efallai y bydd yn rhaid i ni wneud y gwaith ar fyr rybudd, neu efallai y bydd y gwaith yn mynd ymlaen yn hwyrach na'r disgwyl. Ar yr adegau hyn byddwn yn defnyddio cyfryngau cymdeithasol i geisio rhannu manylion cyn gynted â phosibl, er mwyn sicrhau eich bod yn cael gwybod.



## MANYLION CYSWLLT

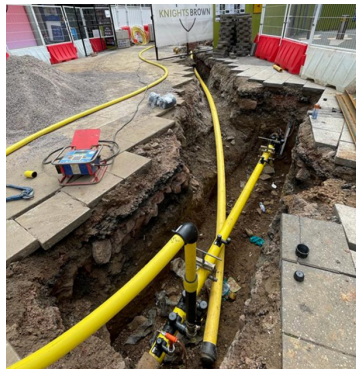
SAFLE: 07790 781360 / 07747 070401  
CYSWLLT CYHOEDDUS: 07818 432183  
MEWN ARGYFWNG 24 AWR: 07747 070401  
EBOST: CHURCHILLWAY@KNIGHTSBROWN.CO.UK



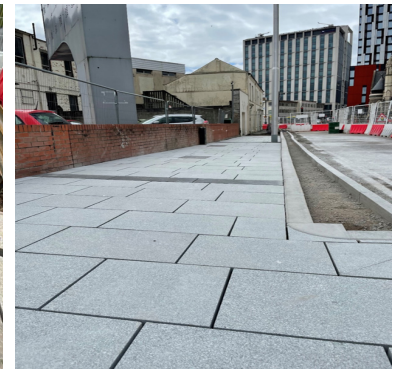
Gwaith ar y rhodfa



Ynys ganolig ar Stryd Adam



Cyfleusterau yn cael eu harallgyfeirio yng Nghwr y Gamlas



Gwaith llwybr troed ar Deras yr Orsaf

## I DDARGANFOD MWY

I ddarganfod fwy o wybodaeth neu i gael y wybodaeth ddiweddaraf am y cynnydd prosiectau ewch i'n gwefan neu sganwch y cod QR isod:



[www.KBCanalQuarter.co.uk](http://www.KBCanalQuarter.co.uk)



We are considerate  
constructors



We are registered with the Considerate Constructors Scheme  
Call: 0800 783 1423 visit: [www.ccscheme.org.uk](http://www.ccscheme.org.uk)



Mae'r safle hon wedi'i chofrestru gyda'r Cynllun Adeiladwyr Ystyriol. I gael gwybod mwy ewch i [www.ccscheme.org.uk](http://www.ccscheme.org.uk)  
Rhif y Safle: 129989



## CHURCHILL WAY & CITY CENTRE EAST PROJECT

### PROJECT UPDATE

Work is well under way to daylight the canal. We anticipate that the cover slab will be completely removed by mid September allowing work to progress on new structural features around the Canal. Bridge abutments are under construction and work will lead into the construction of rain gardens within the Canal Quarter.

We have completed the construction works on Adam Street and following commissioning of new traffic signals on the junction - planned for later this month - vehicles will be able to make a right hand turn off Adam Street onto Churchill Way. We have also altered the layout on Churchill Way introducing a bus gate to the left hand lane of Churchill Way pushing all other traffic to the right of the splitter island. This is designed to improve the flow of all vehicles along Churchill Way.

Construction has progressed along Station Terrace & Guildford Street. Existing pavements and street furniture have been removed and replaced with new street furniture, kerbs and paving. Slight alterations to the road layout have been made in preparation for the introduction of a 2 way cycle lane along side the carriageway.

If you would like to find out more information about travelling within the area during our work please visit our website.

NEWSLETTER SEPTEMBER 2022

### LOOK AHEAD

Over the next month you will begin to notice activity shift along Station Terrace with works being complete in front of Queen Street Station. These works will include three Rain Gardens which will bring a new greener look to the area in the form of bio-diverse sustainable urban drainage systems.

Works are due to begin on North Edward Street. This will feature highway improvements, renewal of pavement, street furniture and drainage along the length of the street helping connect the new Canal Quarter to vital transport infrastructure.

Major works will continue within the Canal Quarter where structures will start to appear above ground including 4 bridge abutments, and a cantilever walkway which will all progress within the month. All Cover Slabs will have been removed in September and groundwork to form the new shape of the street will progress.



Canopy Removal at the Capitol



Gas & water main diversions



Daylighting of the canal and visit from councillors



## COMMUNITY ENGAGEMENT

Firstly, we would like to thank all the schools who have been involved in our hoarding project over the past few months. In total over 180 pupils took part and their work is now displayed on our site hoardings at the Canal Quarter. We hope you enjoyed the project and seeing your final artwork on display.

As part of our commitment to community engagement a number of our site team have signed up to run this years Cardiff Half Marathon on behalf of Shelter Cymru. We have pledged to raise over £2000 to support the amazing work the charity does in supporting those who are homeless or vulnerably housed within the city. Our team is made up of regular runners and first timers who are lacing up their trainers to take up the challenge.

If you have any community ideas or initiatives that you feel we may be able to support then please get in contact with us.

On site we have now installed a viewing area within our hoardings to enable you to view progress as we begin work to uncover the canal in the coming months.

We know that construction work on your doorstep is noisy and disruptive. We truly appreciate your patience and understanding while we complete these works. We do try and keep you up to date on project works but due to the fast nature of this scheme on some occasions we may have to undertake work at short notice, or work may go on longer than we anticipated. On these occasions we will use social media to try and share details as quickly as possible to ensure you are kept in the loop.



**CONTACT DETAILS**

SITE: 07790 781360 / 07747 070401  
 PUBLIC LIAISON: 07818 432183  
 24HR EMERGENCY No: 07747 070401  
 EMAIL: CHURCHILLWAY@KNIGHTSBROWN.CO.UK



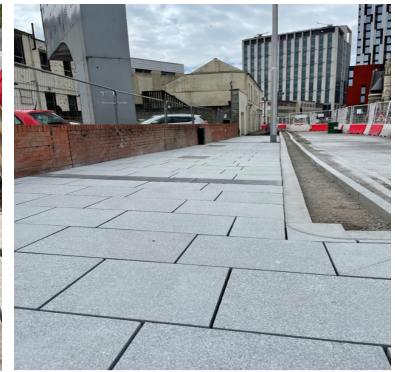
Piling works for the cantilever walkway



Adam Street splitter island




Utility diversions being completed at Canal Quarter



Footpath works on Station Terrace

**FIND OUT MORE**

To find out more information or to stay up to date on the projects progress please visit our webpage or scan the QR code:



[www.KBCanalQuarter.co.uk](http://www.KBCanalQuarter.co.uk)



*This site is registered with the Considerate Constructors scheme. To find out more visit [www.ccscheme.org.uk](http://www.ccscheme.org.uk) Site Reg No : 129989*